

KEIM



THE LASUR EFFECT - RENDER



THE LASUR EFFECT

Product types - Restauro (Brick & Stone), Concretal (Concrete) & Design (Render)

Diluted mineral paint systems designed to look unpainted but blend repairs, imperfections and colour variations

Varying the colours and adjusting the transparency or opacity create a wide range of effects

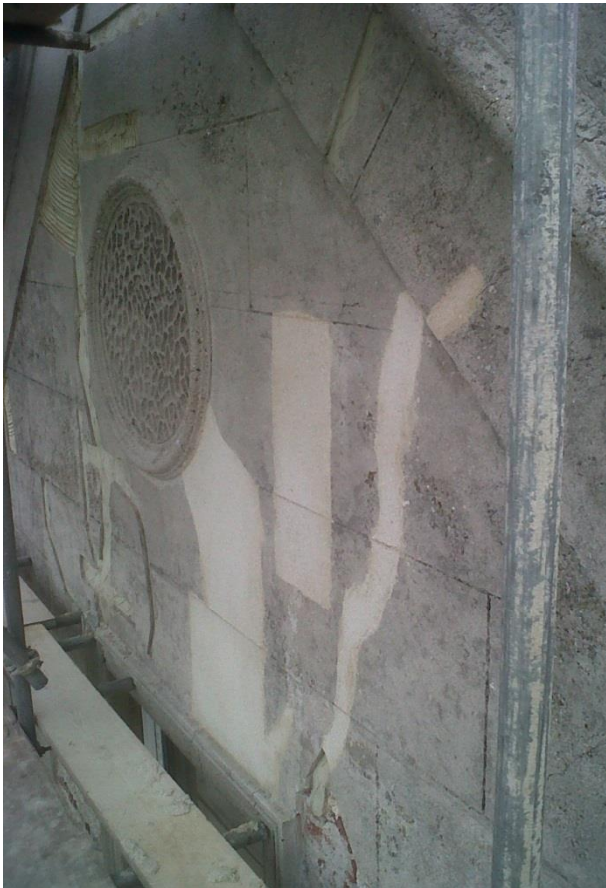
Following photos are of trials and part completed projects to give you an idea of the capability and versatility of the system, for completed projects please see our online product gallery <http://www.keimpaints.co.uk/gallery/>

THE LASUR EFFECT

At a property in Tottenham High Road the base of the columns was repaired and Restauro Lasur used to match the colour and natural effect of the column.



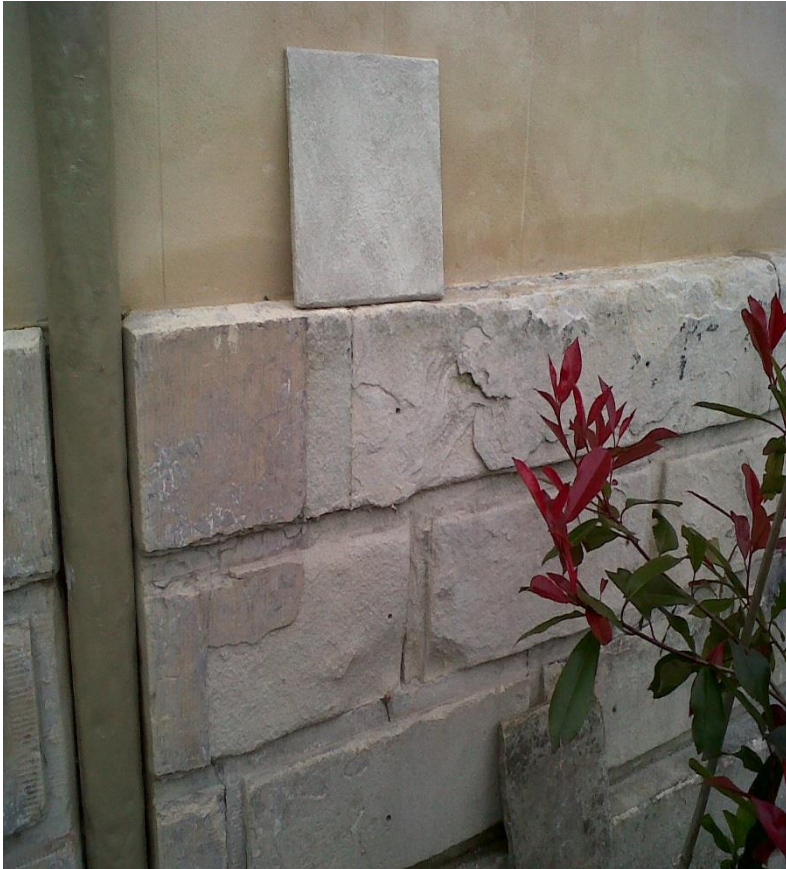
THE LASUR EFFECT



Render repairs at a private property in Worthing were extremely visible against the original render. Design Lasur creates a natural effect which blends the repairs without completely hiding them and giving a look of a painted finish.



THE LASUR EFFECT



Hauxwell Hall - Sample produced onto sample boards of a system which can be applied onto the render to match in with the lower level stone effect.

THE LASUR EFFECT



Creative effect produced using Lasur
at Kensington Palace



THE LASUR EFFECT



Kensington Palace



THE LASUR EFFECT



At this property on Brompton Road, London the cracks in the panels were repaired using a suitable filler product and then Restauro Lasur was used to disguise the repairs whilst retaining a natural effect.



THE LASUR EFFECT

Kedleston Hall, Derby - The higher levels were all ashlar lined render and the Lasur effect used to replicate and match in the stone finish of the ground level and columns to create the look of stone blocks rather than render.



THE LASUR EFFECT



Corinthia Hotel, London –
Portland stone effect
created on ground level
and bath stone above
using Restauro Lasur

THE LASUR EFFECT



The sample boards in this picture have been created to match the colours required in the photograph. By using different colours and application techniques it is possible to closely match the effect using Keim Lasurs.

THE LASUR EFFECT



St James the Less, Guernsey - Lasur effect applied to the exterior to create an intense, limewash type effect

THE LASUR EFFECT



At Hannington Hall in Oxford a limewash type effect was created using Design Lasur



THE LASUR EFFECT



Project in Richmond –
Beautiful Lasur effect
applied to the ashlar
lined render panels



THE LASUR EFFECT – ENDLESS
POSSIBILITIES!

SALES@KEIMPAINTS.CO.UK
